

Türkiye'nin  
kağıtsız ofisi

[incele >>](#)

# CubeBox Cloudy



**SECUBE**

**CubeBox Cloud** is the innovative Cloud service built on **Big Data** technology.

C.Box Cloud allows companies to



your **entire documentary assets**, independently from the format.



→ **CubeBox Cloud is Big Data: the technology of the future**

*We are the first Turkish company to offer a platform for content management taking advantage of the amazing Big Data technology*

→ **A new search model**

*Smart search performed by relevance, not only by text content*

→ **Integrated OCR**

*Simple and fast search on contents with no need of classification, even on scanned documents*

→ **Designed for users**

*CubeBox Cloud was born to gain a simpler access to information. All the barriers rising from the traditional content management systems are now overcome*

→ **Cloud flexibility, at your service**

*Cloud instances can be created right in your Country or in any other desired place, always with the best performances granted by the powerful Big Data technology*

→ **Optimized User Experience**

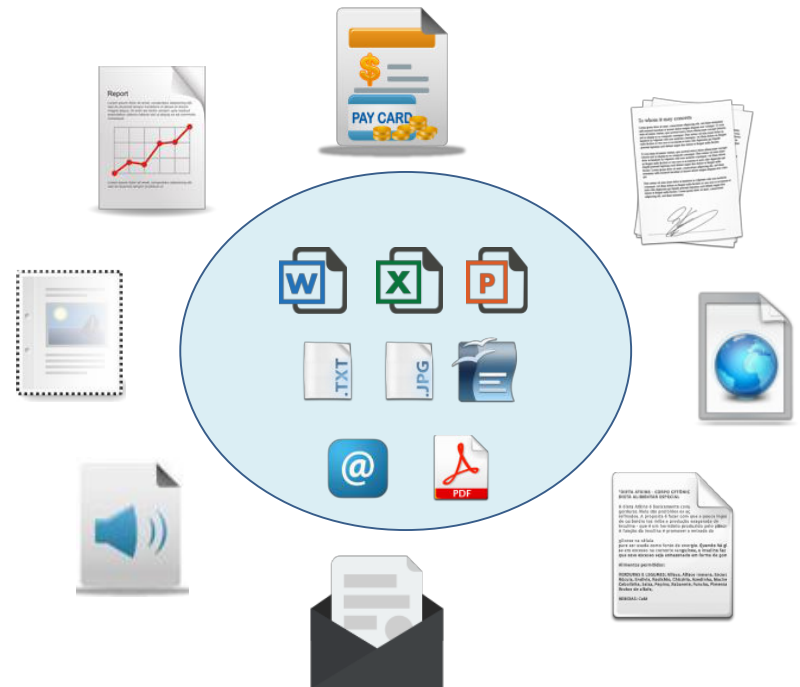
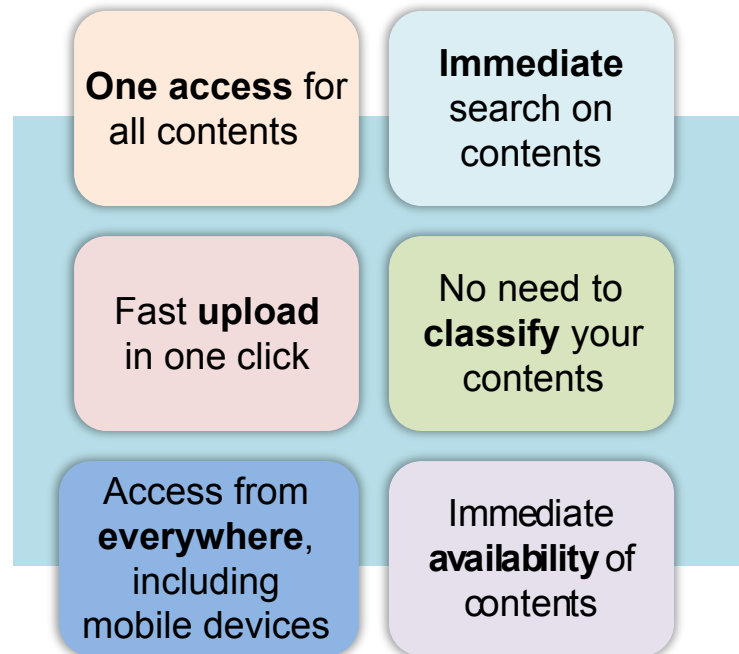
*Access to all contents and features with just a few clicks and a simple web connection: no need of particular skills. Immediate access from everywhere, even from mobile*



# All you contents in one place

CubeBox Cloud allows to manage the documentary asset **independently from the content type and format.**

*Ex. Practices, projects, reports, pictures, surveys, reports, orders, invoices, contracts, spreadsheets, emails...*



# A simple user interface

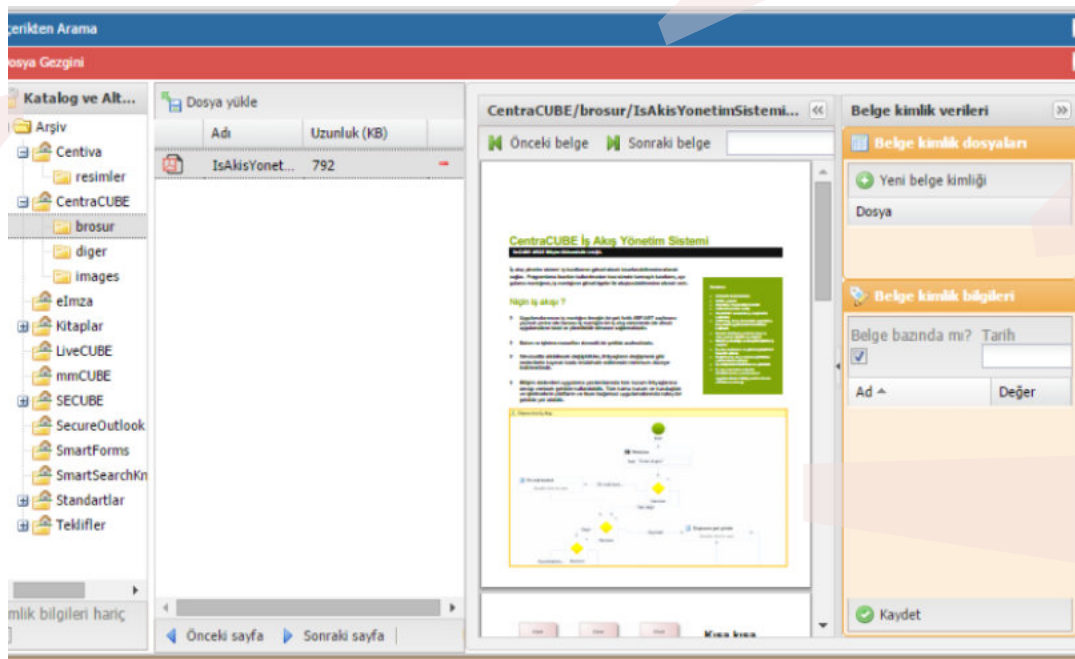
With CubeBox Cloud an **optimized user experience** is guaranteed.

All the features are accessible in a few clicks, you only need a web connection.

It is so simple that anyone can use it: no need of specific skills

Searchable PDF option

Fast  
User-friendly  
Effective



Immediate preview of  
searched contents

Archives navigation

Results ordered by  
"relevance"  
(score)

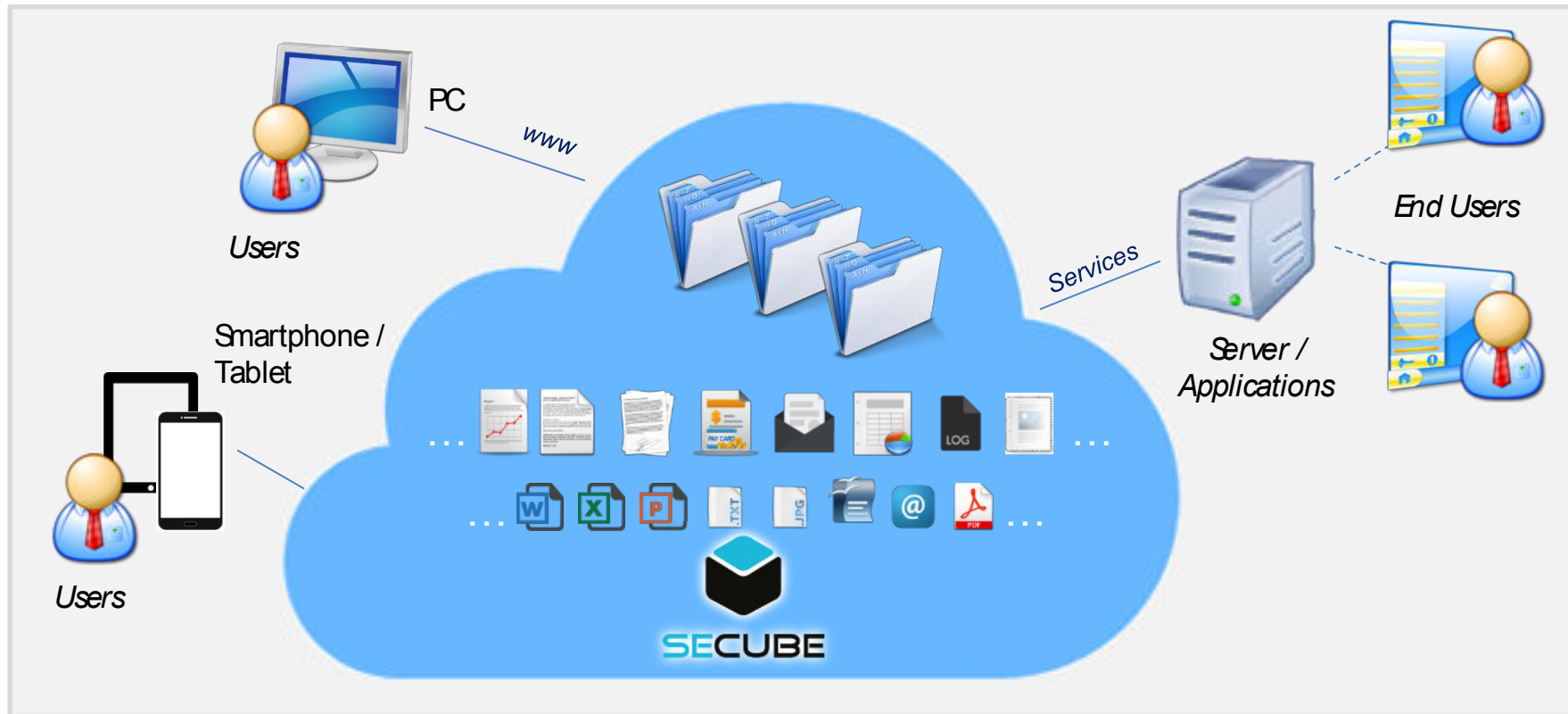
# CubBox Cloud: Model

CubeBox Cloud supports a **flexible model** which guarantees:

**The access** to single functions by the authorized users with a workstation connected to the internet

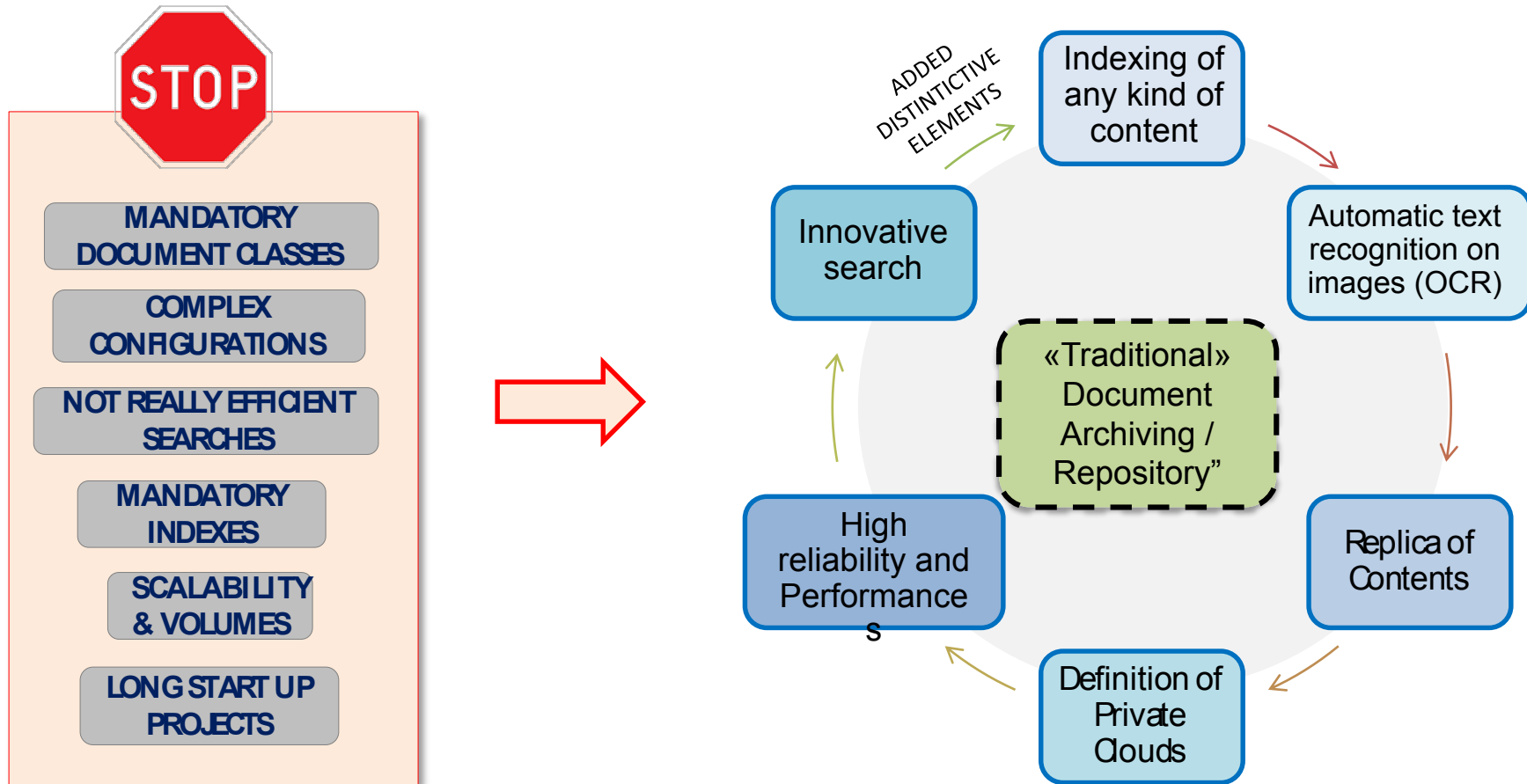
Optimized **interfaces** for **mobile** devices (smartphone/tablets) (\*)

**Integration services** to allow the integration with other applications



# A new document management approach

CubeBox Cloud **extends** the traditional functions of documental archive and repository with **new distinctive features**, which allow to obtain clear **benefits** with respect to the traditional systems of content management.





## Feed the digital archive

- ➔ Multifunction upload of documents, from web interface or from PC desktop
- ➔ Contents of every type (letters, pictures, contracts...) and format (word, excel, ppt, log, txt...)
- ➔ Logical classification and of documents and assignment of *tags*



## Search for contents



- ➔ *Google-like* search
- ➔ Search ordered by relevance
- ➔ Search by custom *t a g s*
- ➔ Search by one ore more contained words, also on scanned documents
- ➔ Search by file properties (date, hour, file name...)

## Organizing and consulting the archive

- Customize folders
- Update and delete contents
- Profiled users with custom access authorizations
- No need to install programs: access from any PC connected to the internet
- Optimized navigation for mobile devices



## Living the Big Data experience



- No additional costs for infrastructures, with Cloud
- service Excellent performance
- Quick start and first configuration
- Freedom of managing new documents and new file formats, immediately available for search
- Cross access and search on your entire content asset

# A whole new scenario with CubBox Cloud

A **complete** and evolved platform, with **distinctive features** that allow to **reduce operations and costs** compared to a traditional approach of documental archiving:

- ✓ Archive **start and configuration** – *no longer need of complex projects*
- ✓ **Operative management** of contents
- ✓ Definition of **new valuable services** for customers and associates
- ✓ **Extension** of the solution for increased volumes – *high performance also with larger volumes of contents*
- ✓ **Supplying** of the services - *native high reliability and copies of the documents*

## BEFORE

### Analysis

Limited analysis capability, extended only to those structured information already acquired from legacy systems



### Search

Only specific search on documents, based on structured archives



### Services

Use of document/ content management systems mainly for internal use



**Extended analysis capability:** access your contents in a new innovative way, allowing **further analysis** on clients and business

**Cross search and consulting,** optimizing and enriching the enterprise information asset

Definition of **new valuable services**, to support the loyalty-enhancing processes of clients, partners and associates.